

Quick Start Instructions

Radica Provisional Fabrication Procedures



Fill in the edentulous areas.



Make a silicone matrix.



Trim the matrix.



Make depth cuts 1.0 mm.



Open the interproximals.



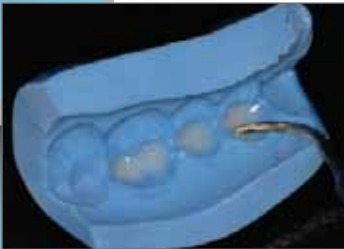
Uniform 1.0 mm reduction.



Apply the model separator.



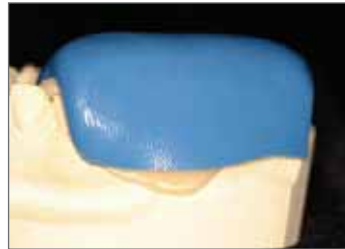
Express the enamel.



Smooth out the enamel.



Express the dentin.



Quickly place the matrix.



Wait 2 minutes and remove.



Add on additional material if necessary.



Remove the excess material.



Apply the sealer.



Cure using the correct cycle.



Remove from the model and finish.



Sandblast to clean.



Apply the sealer/glaze and cure.



Completed restoration.

NOTE: Bridges with pontics require a pontic cure cycle. See chart on back.