

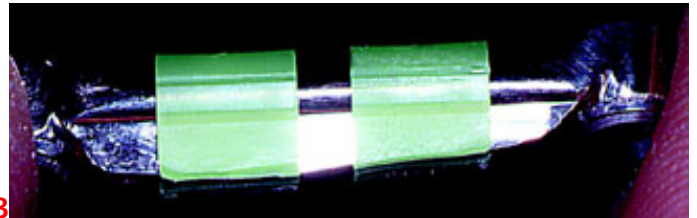
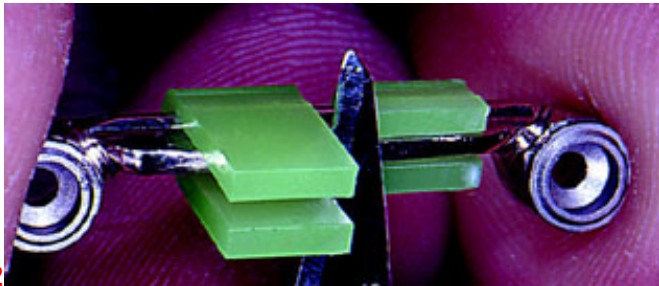
Hader Bar Chairside Instructions

Blockout the undercut area between the bar and tissue (**FIG 1**)

[Perma Block](#) material is recommended.



Please note that the two pictures below only illustrate the use of the green processing spacers; by no means remove the bar.

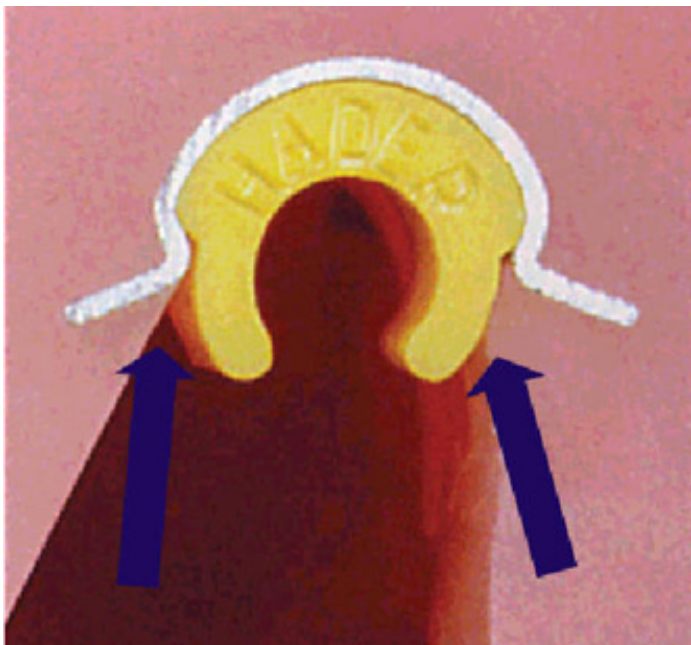


Fully seat the green processing spacers on the bar, and trim the spacers to the vertical height of the Hader Bar (**FIG 2-3**)



Why use the Processing Spacers?

The width of the "tail" of the green processing spacers matches the widest part of a Hader clip. This allows easy insertion and removal of the actual clip, and more importantly provides a "tunnel" that is



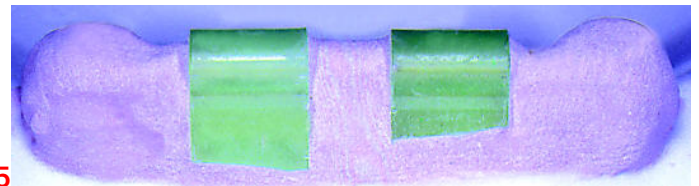
wide enough for removal and insertion of the prosthesis.

The **left side** of this picture shows the tunnel created using the processing spacer. The flange of the clip has room to flex and engage the Hader Bar..

The **right side** of this picture shows the problems that may be encountered when not using the processing spacer--the clip is locked in acrylic; the flanges of the clip are pressed inward making clip wear very possible, and insertion very difficult or even impossible without breakage. This clip can not expand, or flex outward while going over the height of contour of the bar.

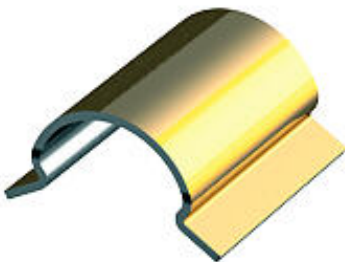


4

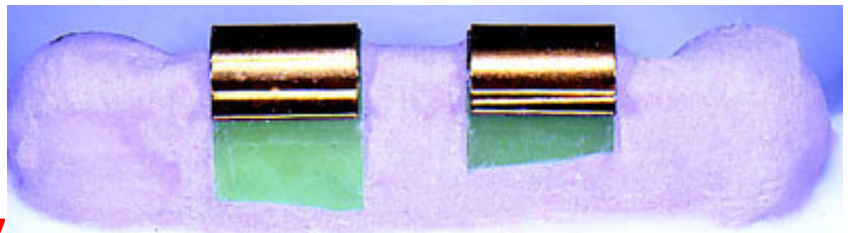


5

With the processing spacers in place on the bar, use blockout wax, plaster, Play-Doh, or blockout material of choice to blockout the remaining undercuts of the bar. Remember to cover the upper free areas of the bar and abutments. Leave the processing spacers free of any blockout material (**FIG 4-5**).



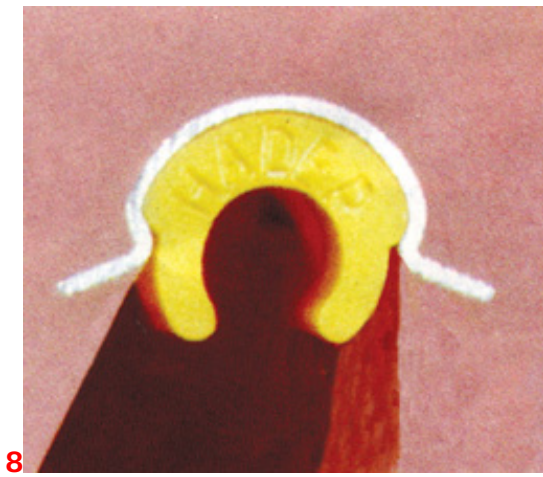
6



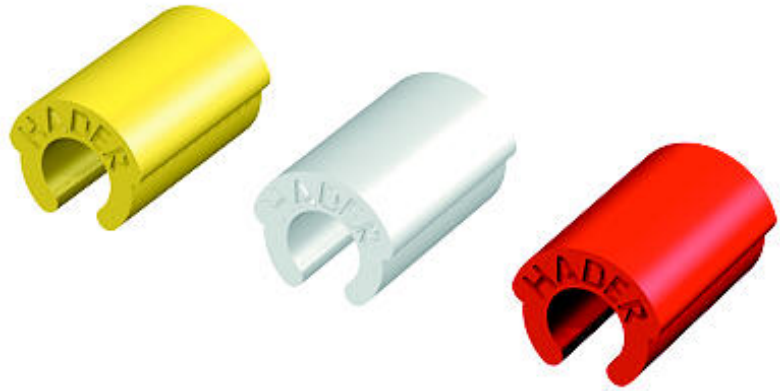
7

The Horix/Hader Metal housing (0.2mm thick) allows for an accurate seating of the Hader clip along with easy clip insertion, removal, and replacement (**FIG 6**). Seat the Metal Housings on to the green processing spacers (**FIG 7**) and process the housings into the prosthesis. A lingual escape vent is always advisable to allow excess acrylic to escape. Place self-cure acrylic in the recess of the prosthesis, and the housings, and seat the prosthesis with finger pressure. Do **NOT** have the patient bite the prosthesis into place, as this will displace tissue and distort the vertical alignment.

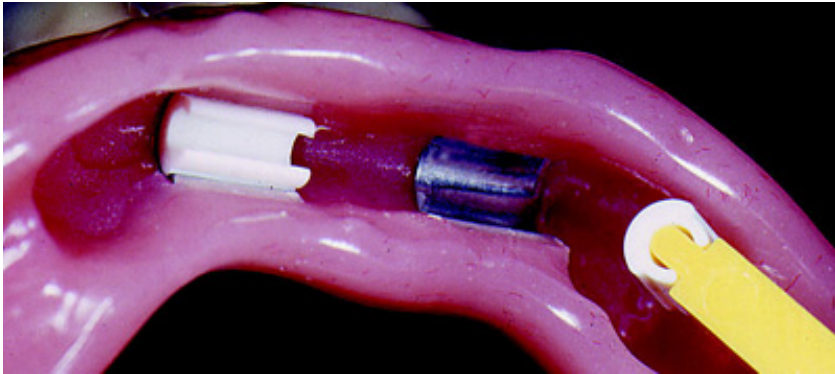
Once the resin has set, remove the Green Processing Spacers. Using the Insertion tool, snap in the Hader clip.



9



This cross-section clearly shows the function of the Metal Housings (**FIG 8**). The Hader Clip, or female rider, is authentic Hader as can be seen by the word "HADER" on the end. The yellow clip is normal retention, orange is increased retention, and white is reduced retention (**FIG 9**).



The finished prosthesis

Please note the tunnel provided by the green processing spacers and the easy insertion of the clips due to the placement of the metal housings.

T0043.REV.02